

Gloucester Terrace, W2 6HP

£325,000

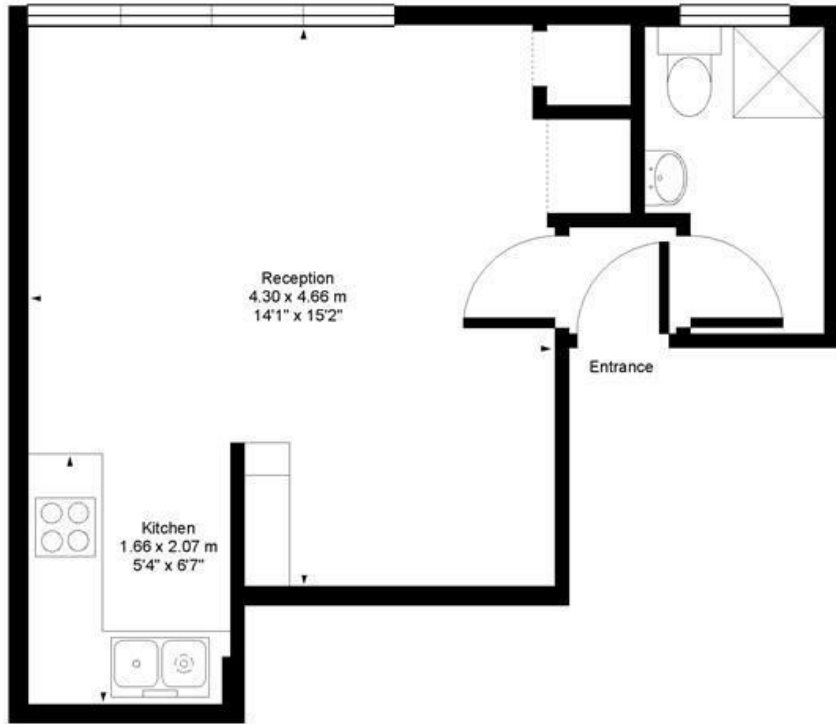


SOLE AGENT. A bright and spacious studio apartment set on the top floor of a white stucco fronted period building on popular Gloucester Terrace in the heart of Bayswater. Recently refurbished, this studio comprises of a spacious room, semi open plan kitchen and shower room. Ideally located for the shopping, transport and restaurant facilities of this cosmopolitan area. Would make a perfect rental investment or pied a terre. Book a viewing now to avoid disappointment.

Gloucester Terrace W2

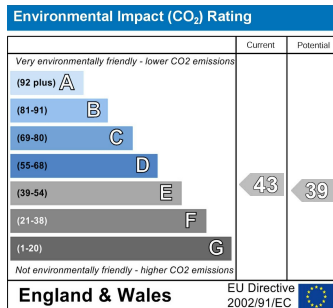
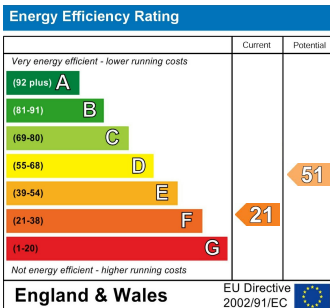


Approx. Gross Floor Area = 26 sq.meters • 288 sq.feet



THIRD FLOOR

For illustrative purposes only. Not to scale. Prepared by swan-photography.co.uk



TENURE

Leasehold 90 years
Service Charge £1780 p.a.
Ground Rent £50 p.a.